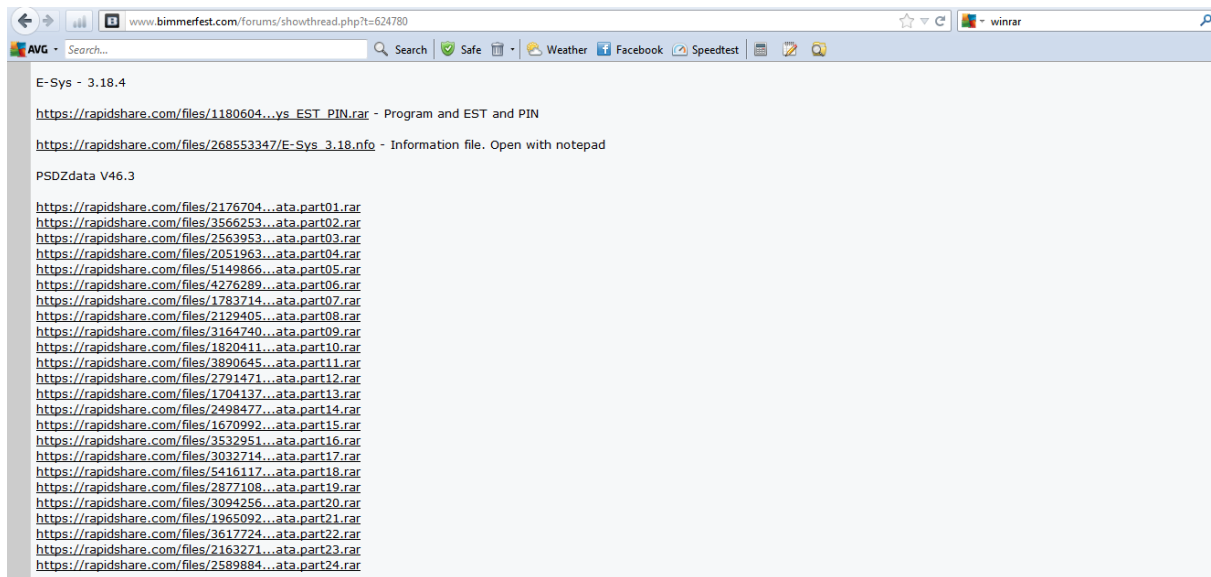


# Installing E-SYS

These instructions will show you how to properly set up E-SYS on your PC so you can program your BMW. I take absolutely no responsibility for your actions; these are simply the steps I followed which resulted in a successful setup on my PC and I have been able to make multiple customizations to my 535's VCM. Good luck and enjoy!

## Downloading the Files

1) You need the following files on your PC before getting started:



2) They should all be downloaded into the same place/folder.

3) All of these files are posted here: <http://www.bimmerfest.com/forums/showpost.php?p=6872908&postcount=1>

## RAR Extractor

Once the files are downloaded, you will need an extractor utility installed on your computer. I used WINRAR and it worked just fine:

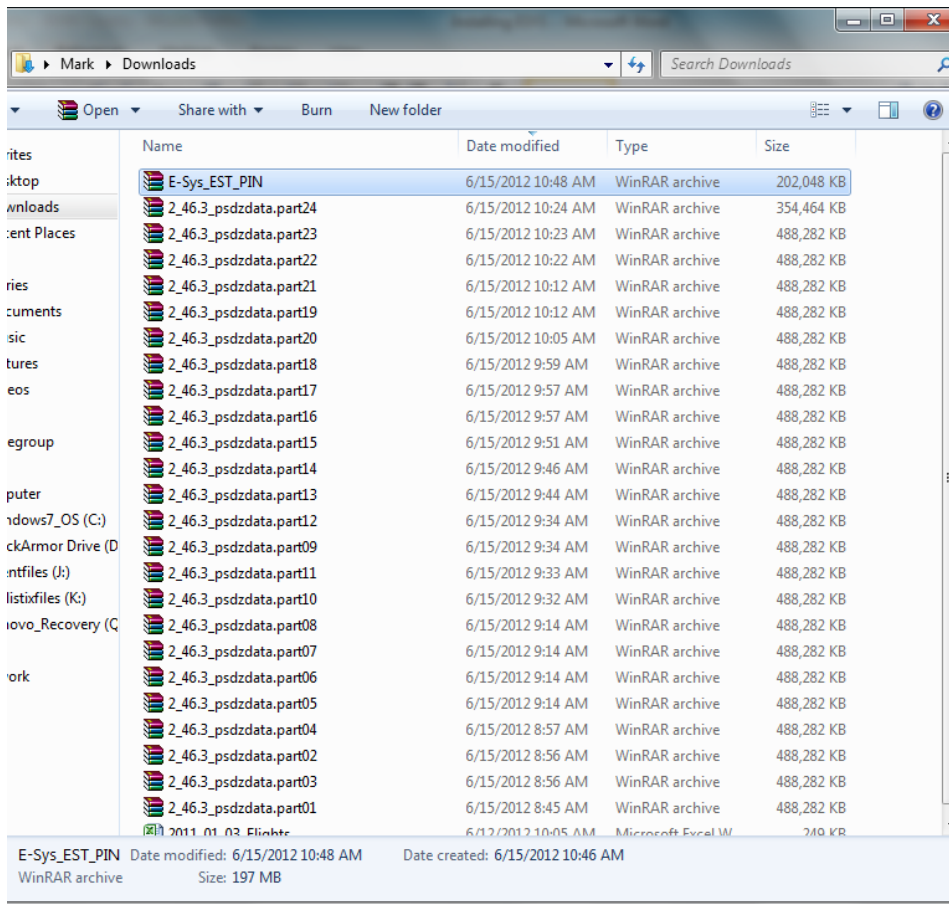
<http://winrar.soft32.com/free-download?gclid=CMfO657N0LACFQYKKgodNQ4VXg>

Note that the link above is for 32-bit operating systems; if you have a 64-bit system, there is a version for that which will result in slightly better performance.

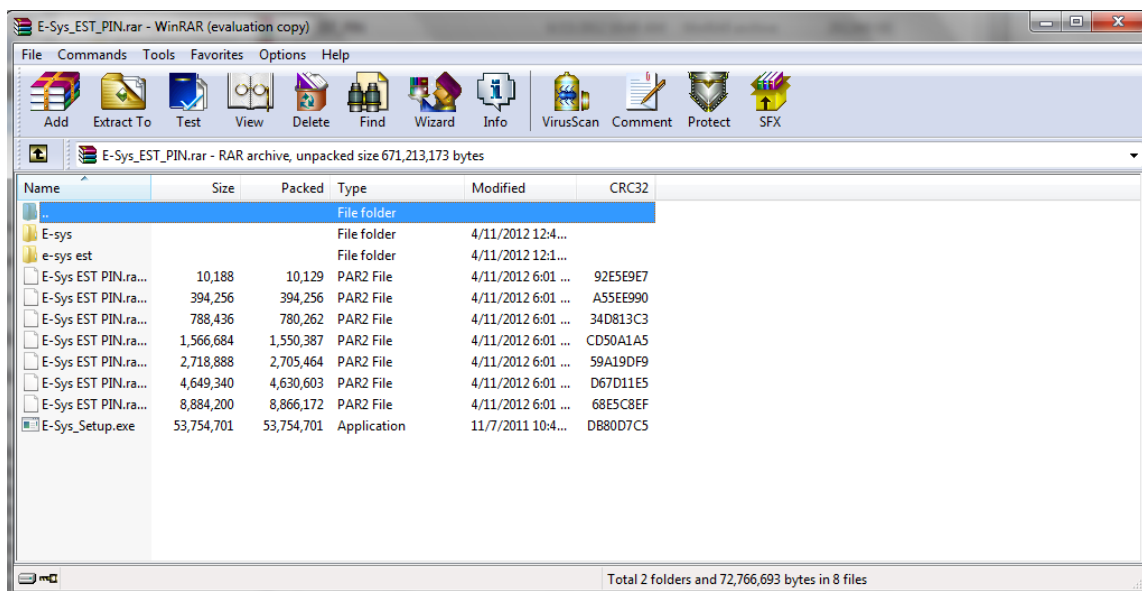
Once you have downloaded all the files and RAR Extractor, you are ready to begin installation of E-Sys.

# E-Sys Application Installation

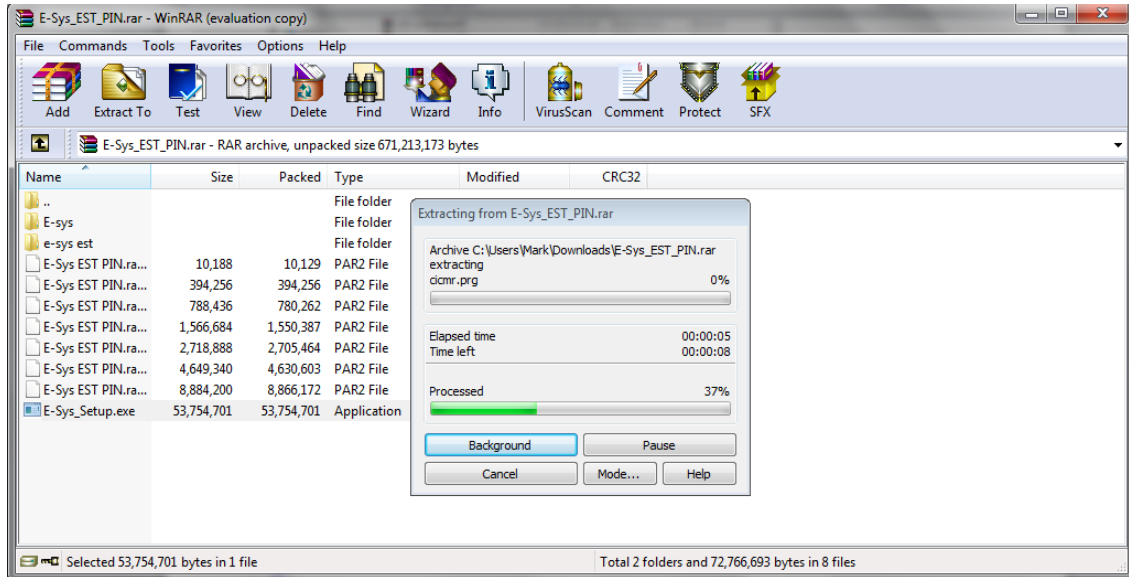
- 1) Find the location of your files on your PC and open the window. Do yourself a favor and make sure they are ALL there:



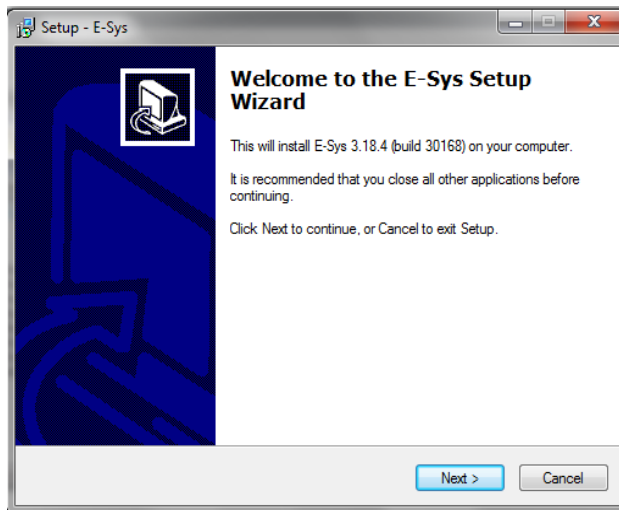
- 2) Open the E-Sys\_EST\_PIN file. Depending on the RAR extractor you have installed, it should open in that application.



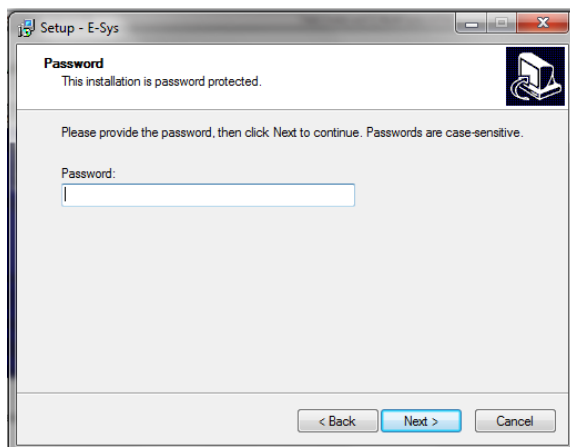
3) Double-click on the very last file, E-Sys\_Setup.exe. WINRAR will begin extracting:



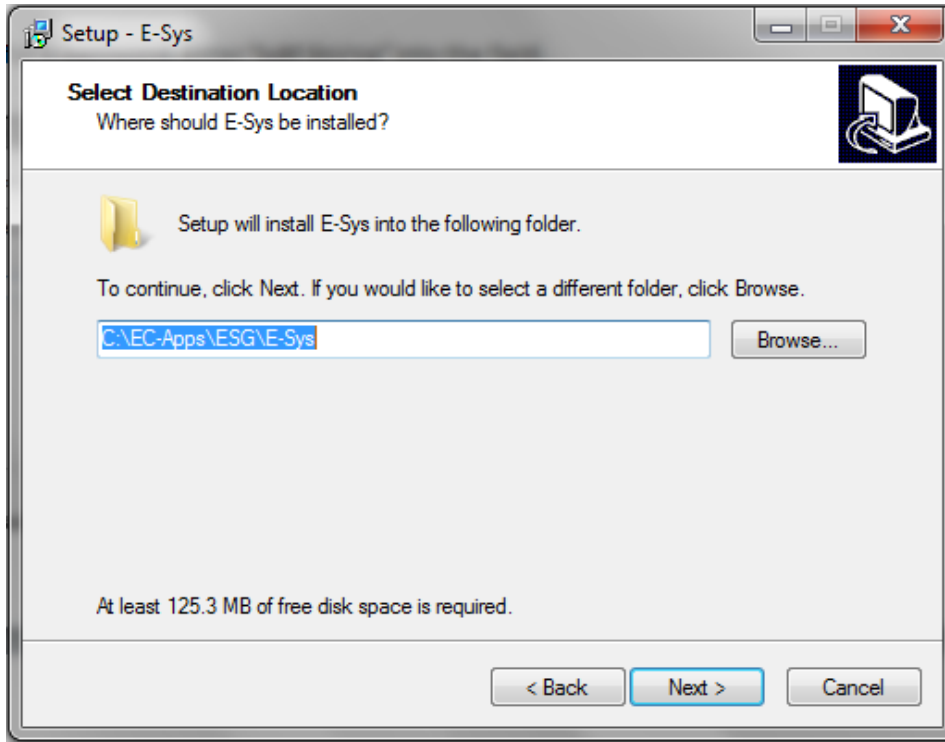
4) Once the extraction is complete you should get a window like the below. Click "Next:"



5) It will ask for a password. Enter "lo8F3lsVvG" into the field.

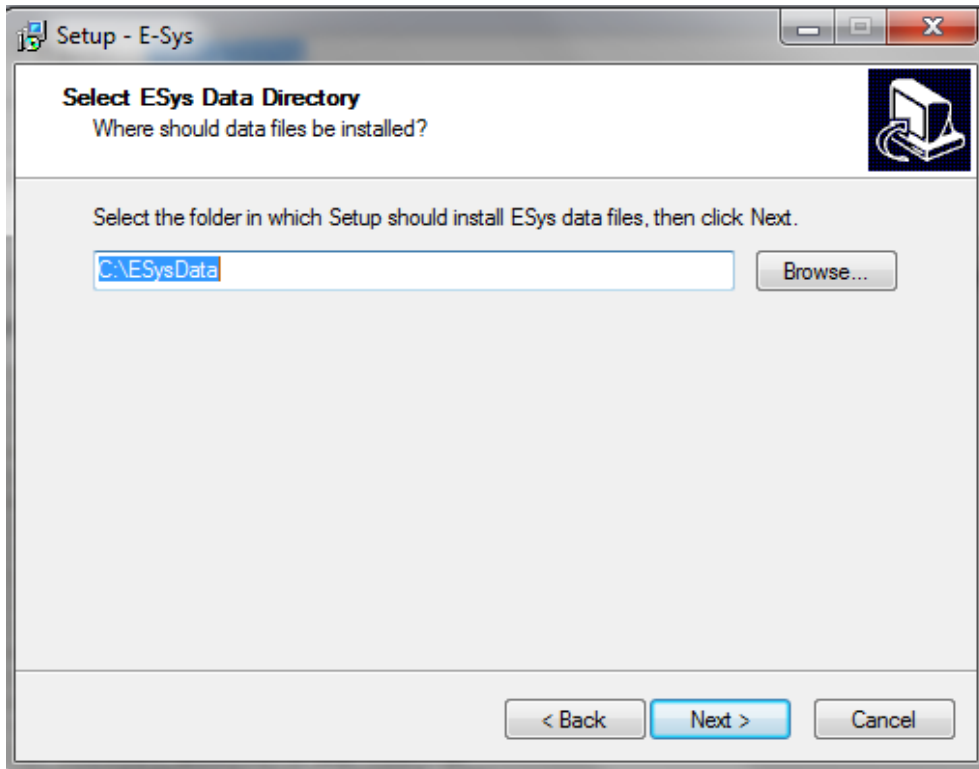


6) You'll then get this dialogue box to specify where the program installation will reside on your PC:

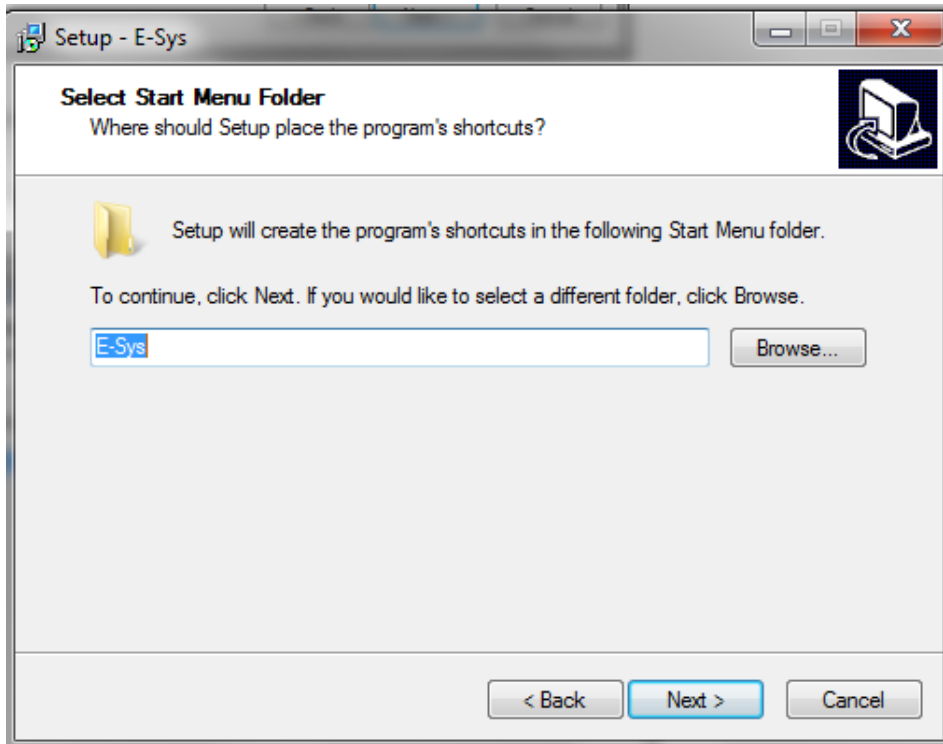


In most installations, you probably don't even need to customize. I just left the default location.

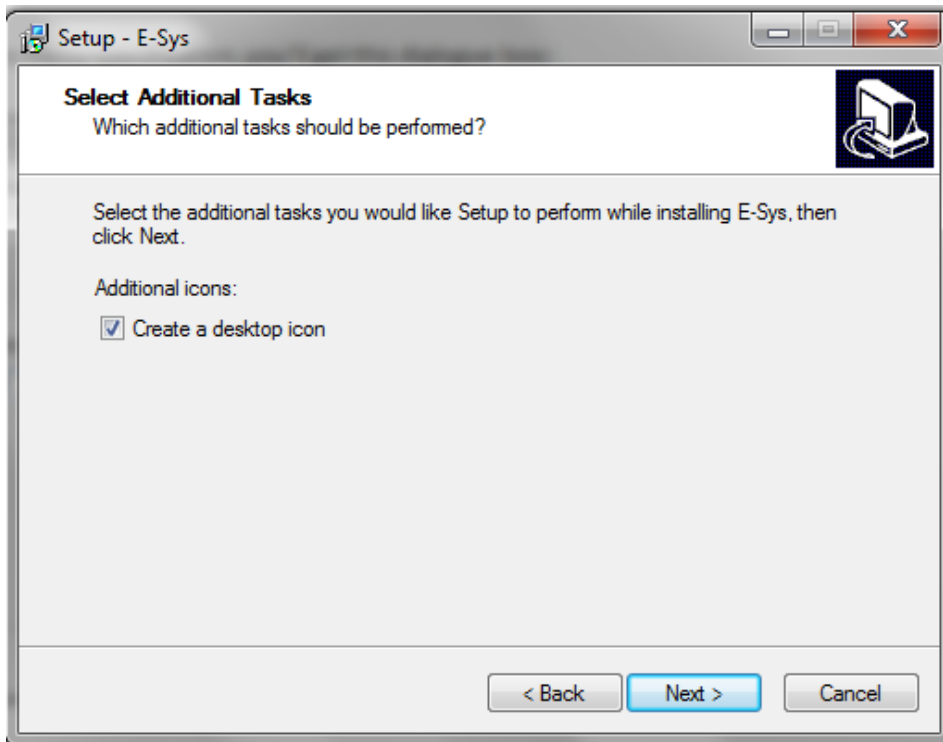
7) Next, you'll get this dialogue box to specify the data files. Again, it's doubtful you'll need to customize:



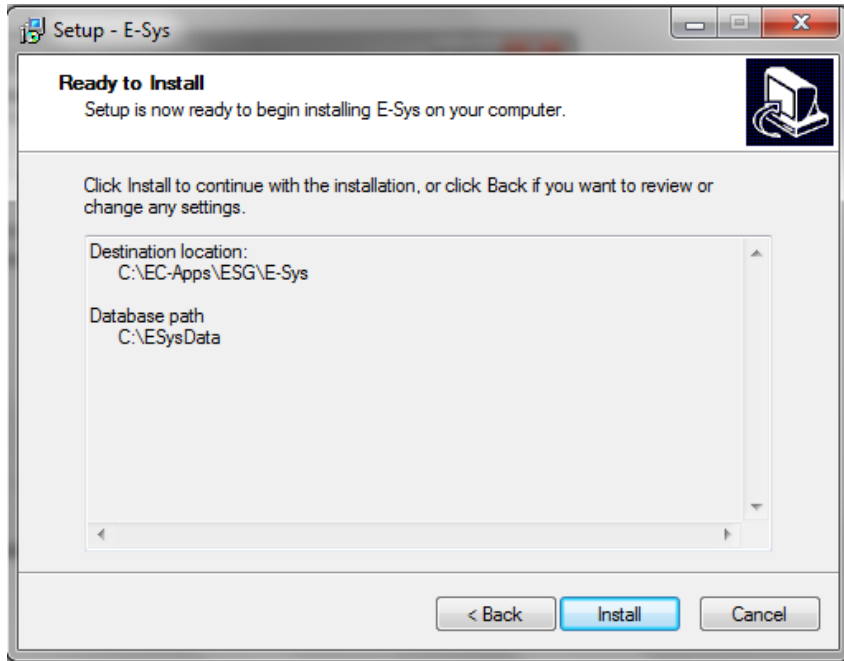
8) And for the menu specification, you'll get this dialogue box:



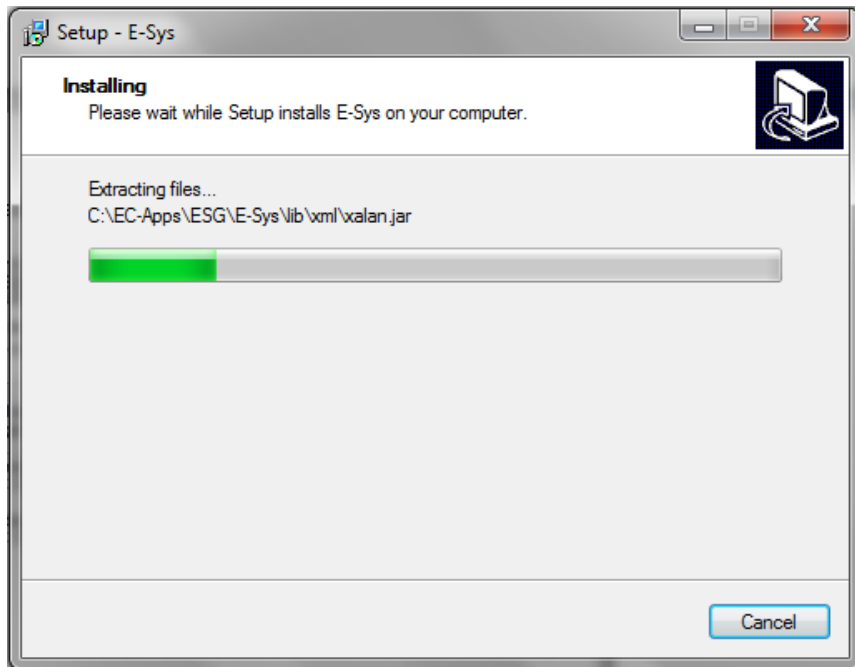
9) Should you want to create a desktop icon:



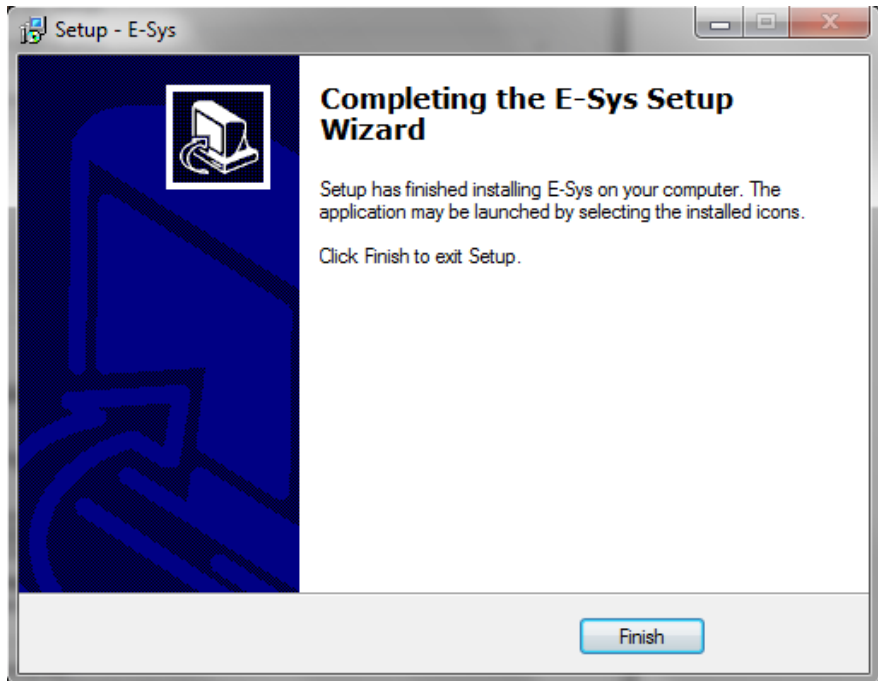
10) Finally, ready to install:



11) It's installing!



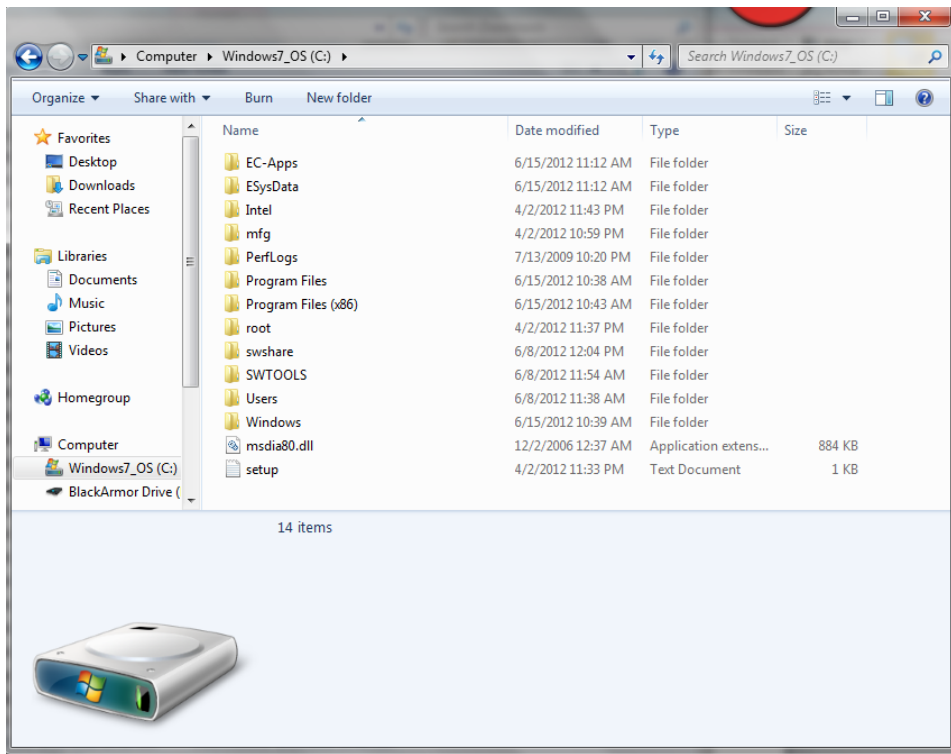
12) And now it's finished, so click "Finish."



At this point, you have the E-Sys Application installed on your PC, but it's not ready for use. You need to add data files (essential) as well as move some other files around so it works properly.

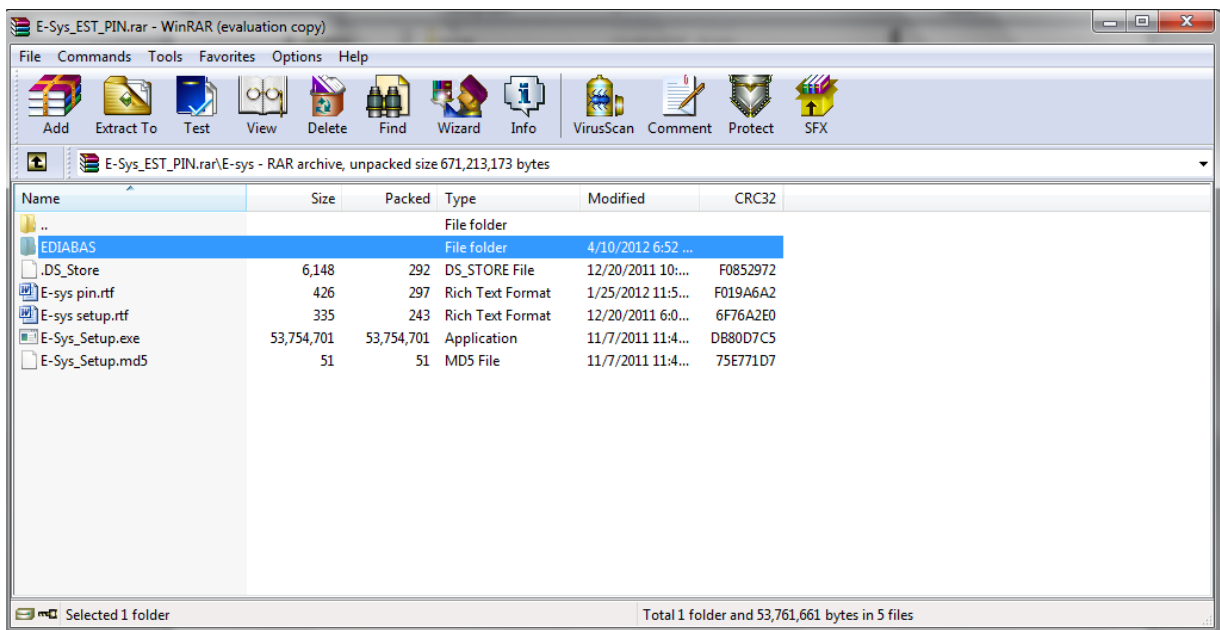
## Locating the E-Sys Program Files on Your PC

- 1) Now that the application is installed, find the files on your hard drive. Assuming your hard drive is “C,” they should be right inside. The folders will be “EC-Apps” and “ESysData:”



## Add the EDIABAS folder to your Hard Drive

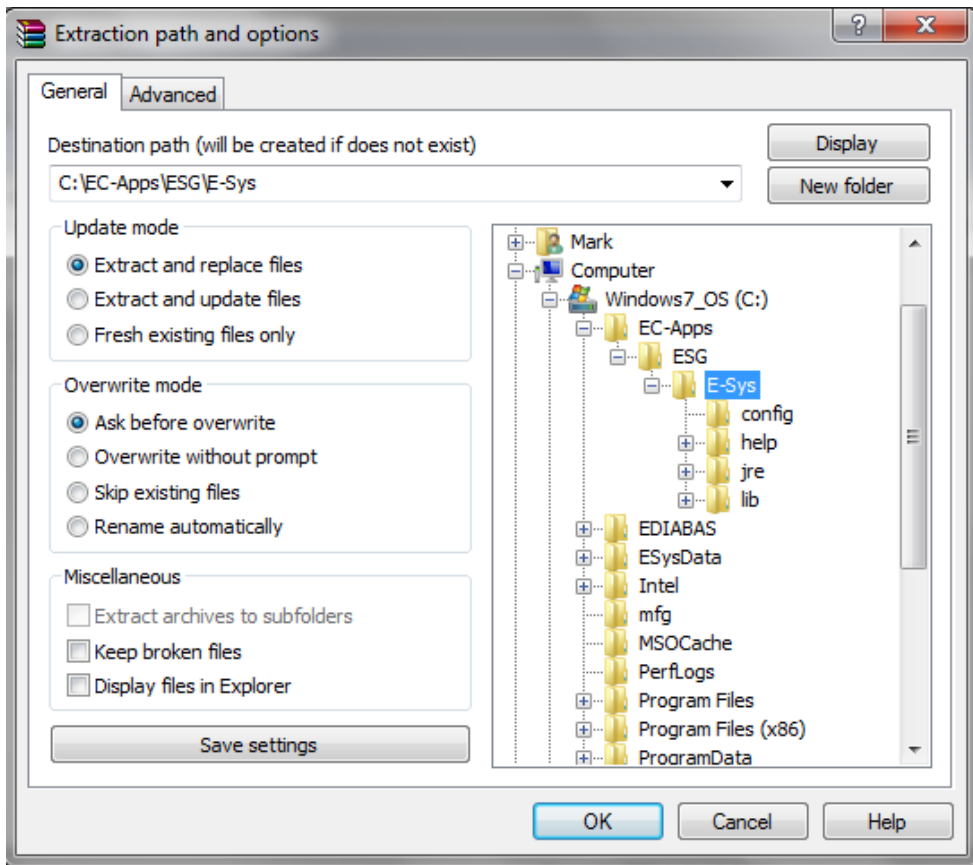
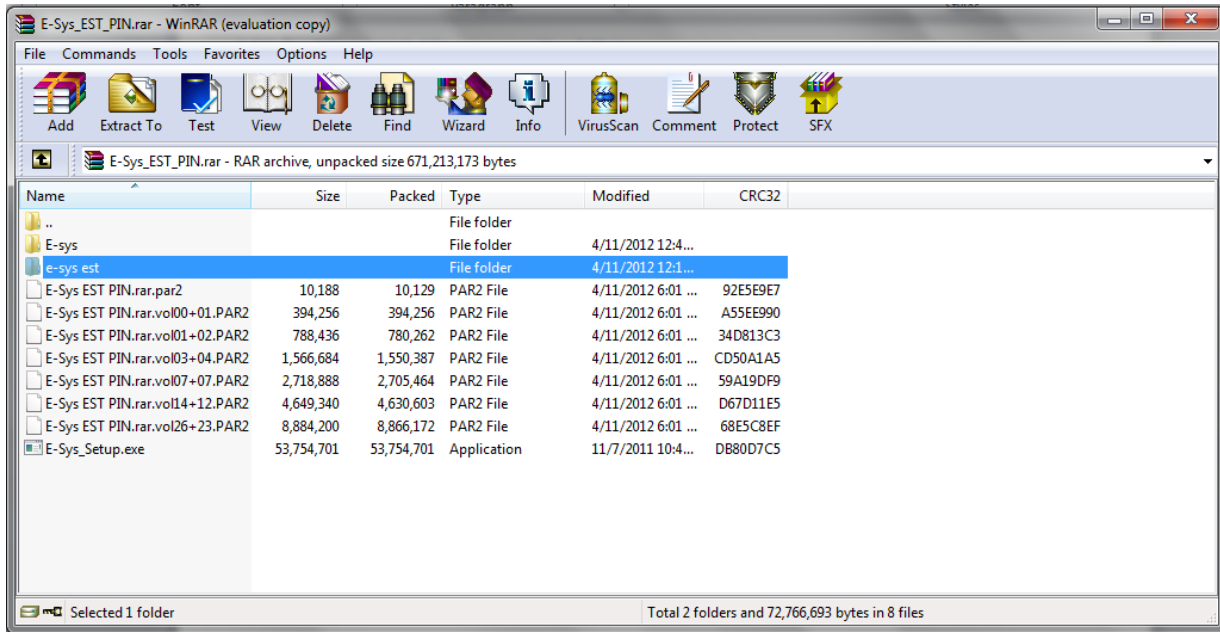
- 1) From the E-Sys\_EST\_PIN RAR file, extract the EDIABAS folder to your hard drive (C:\).



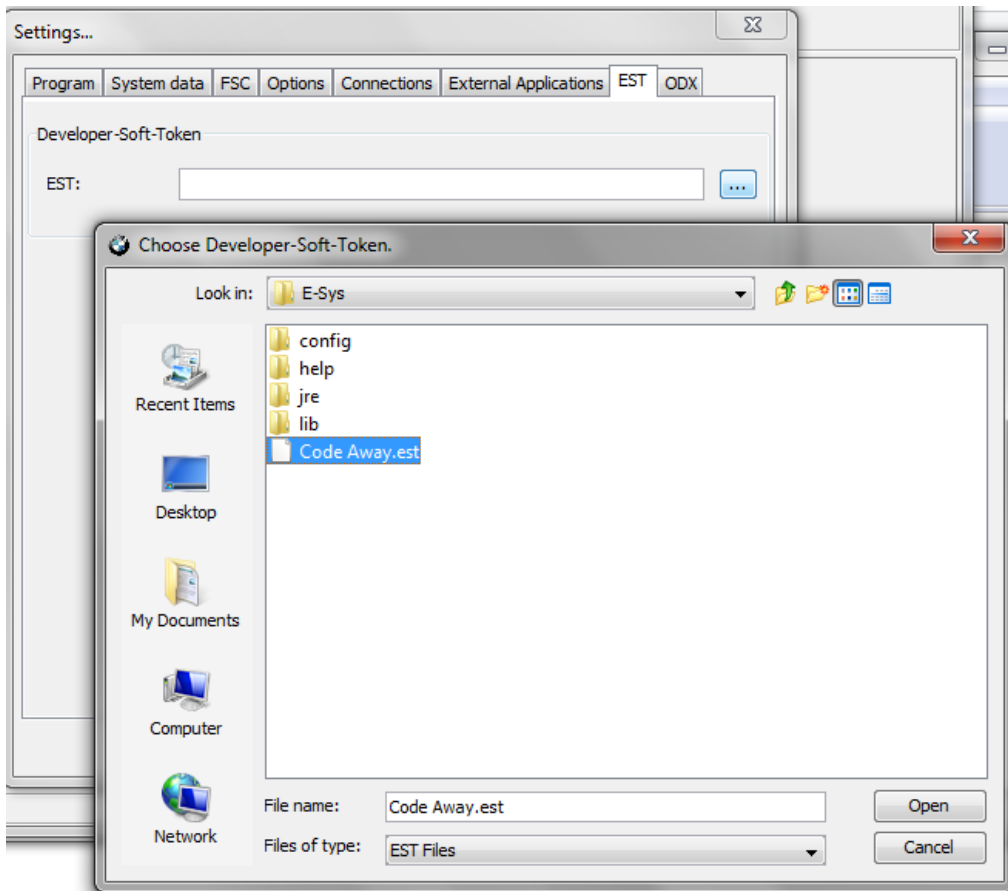
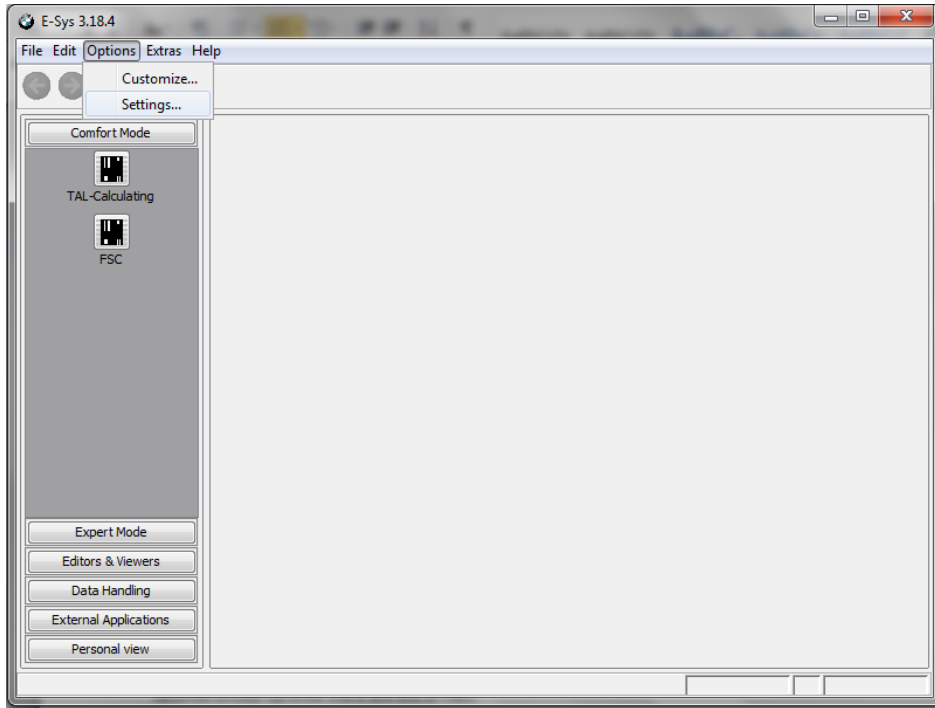


## Add the Token EST File

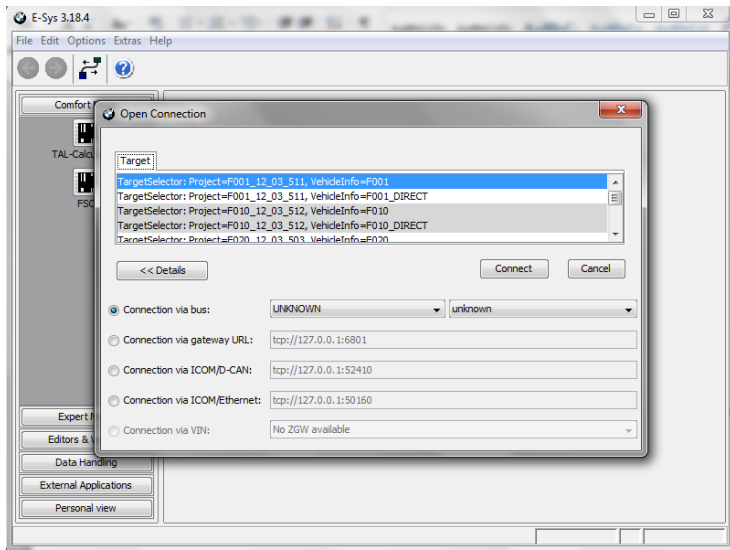
- 1) Open the “e-sys est” folder from the E-Sys\_EST\_PIN RAR file and extract the “Code Away.est” file into the E-Sys Program file. You can put the file anywhere, but be sure to remember where it is because you will need to point E-Sys to its location.



- 2) Once the Code Away.est is extracted, open the E-Sys Application. When it has finished loading, click on Options > Settings > EST Tab. Locate the Code Away.est file and select it:



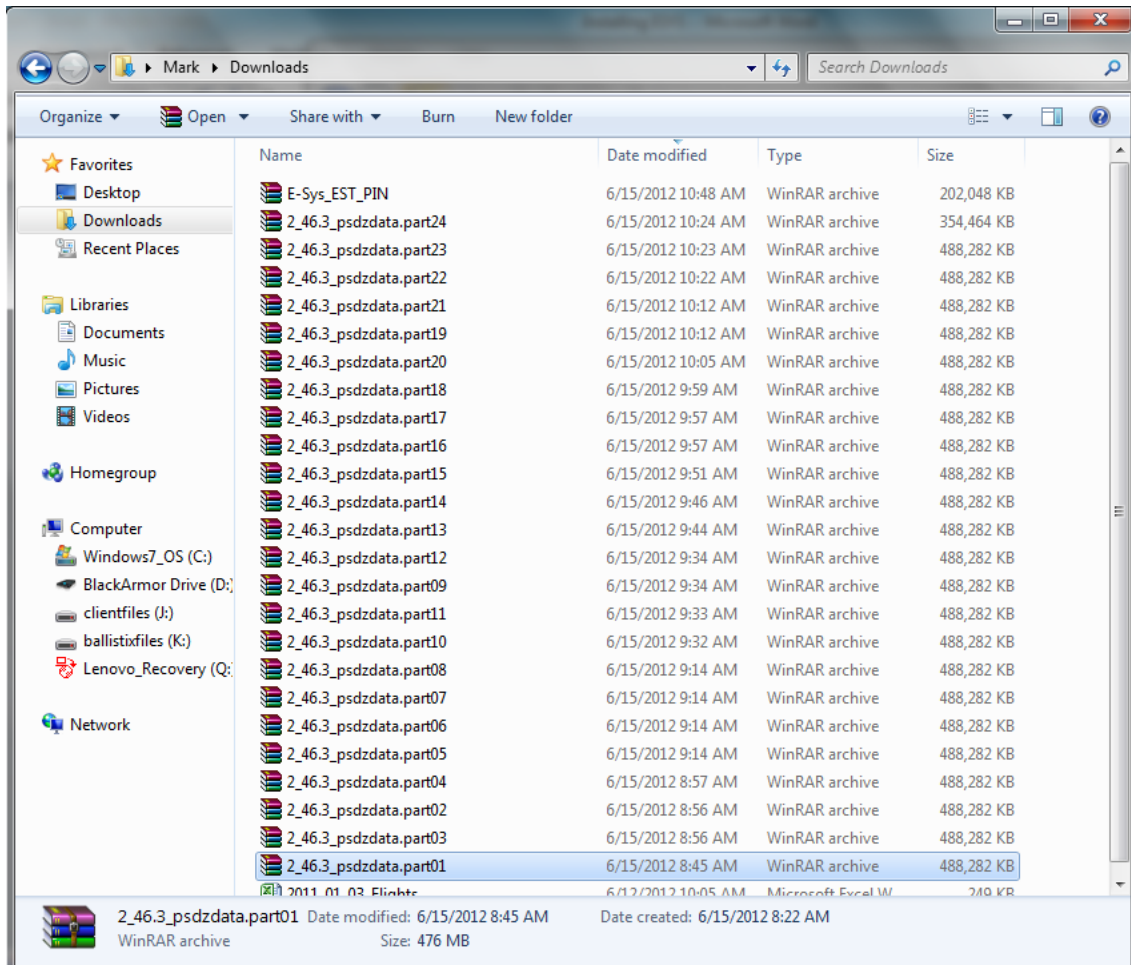
- 3) After selecting the EST file, it will likely prompt you to restart the application (not the computer). It's probably a good idea to do so. When it does restart, the following communication box appears:



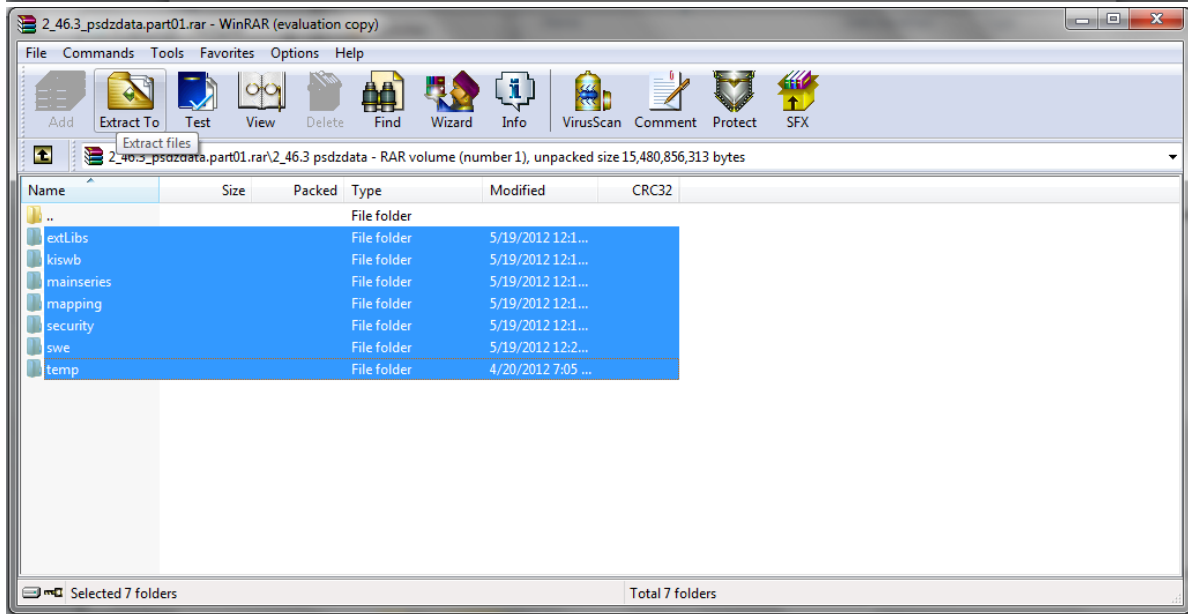
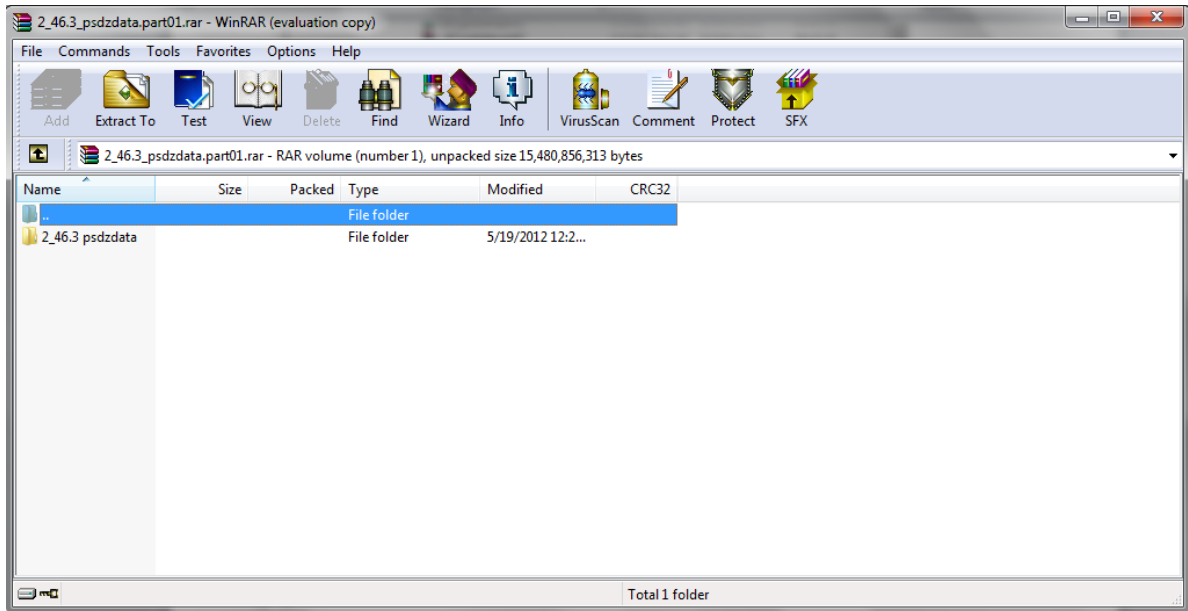
Don't do anything in that box; simply close out of E-Sys because it's not yet ready for use.

## Extracting the PSDZDATA

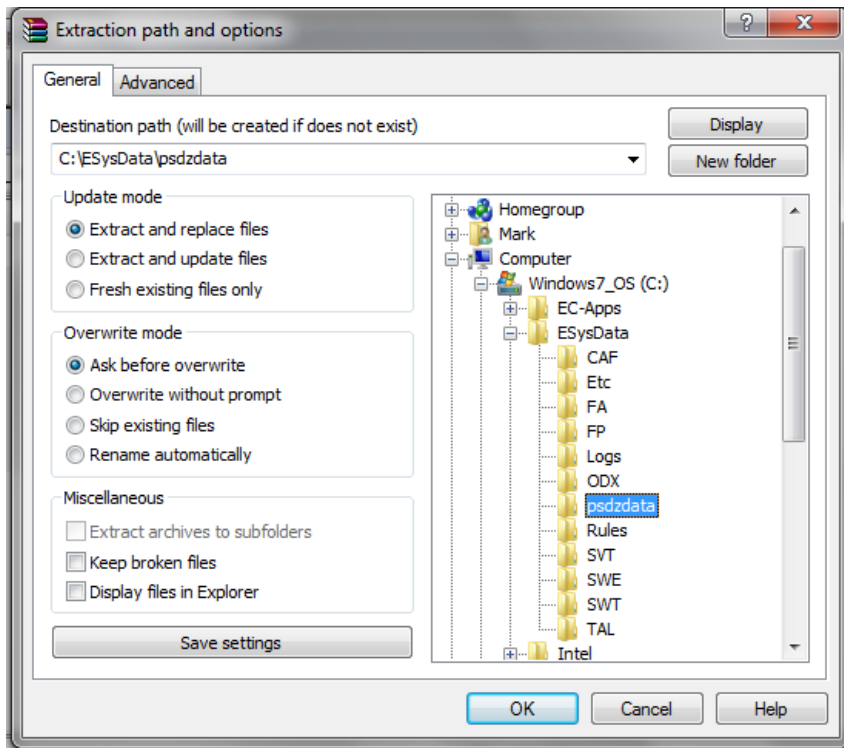
- 1) In the folder where you have all of the RAR files, open 2\_46.3\_psdzdata.part01 in WINRAR. It takes a few seconds to load up since there are lots of files.



- 2) Double-click on the 2\_46.3 psdzdata folder and select all of the folders inside. Click on “Extract To” in the menu ribbon at the top. (NOTE: Do not extract the 2\_46.3 psdzdata folder itself because the file name will be wrong.)

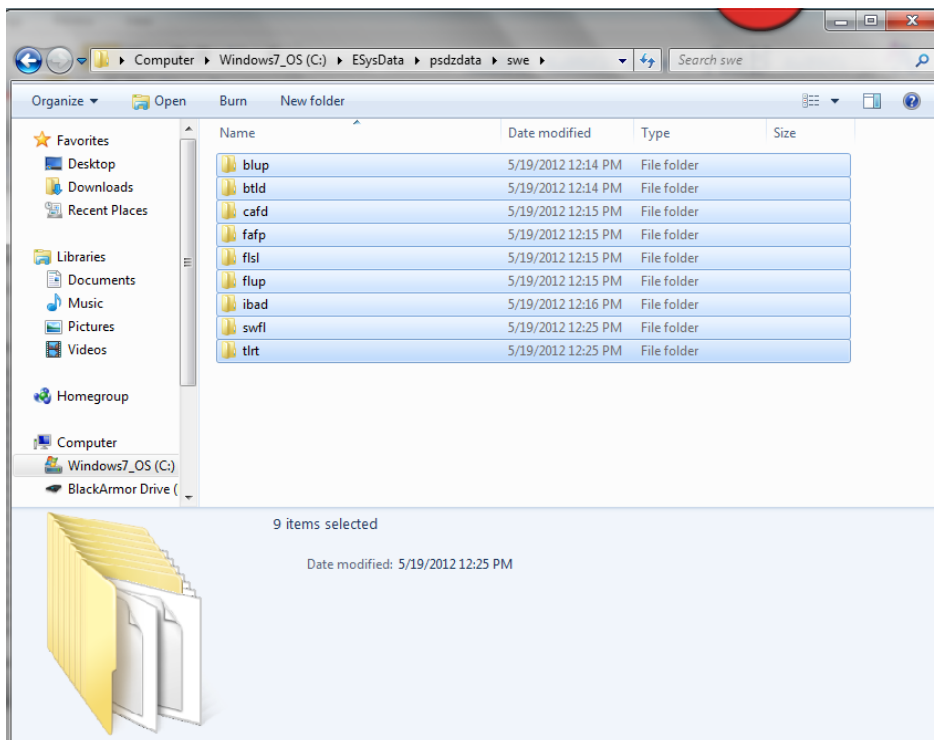


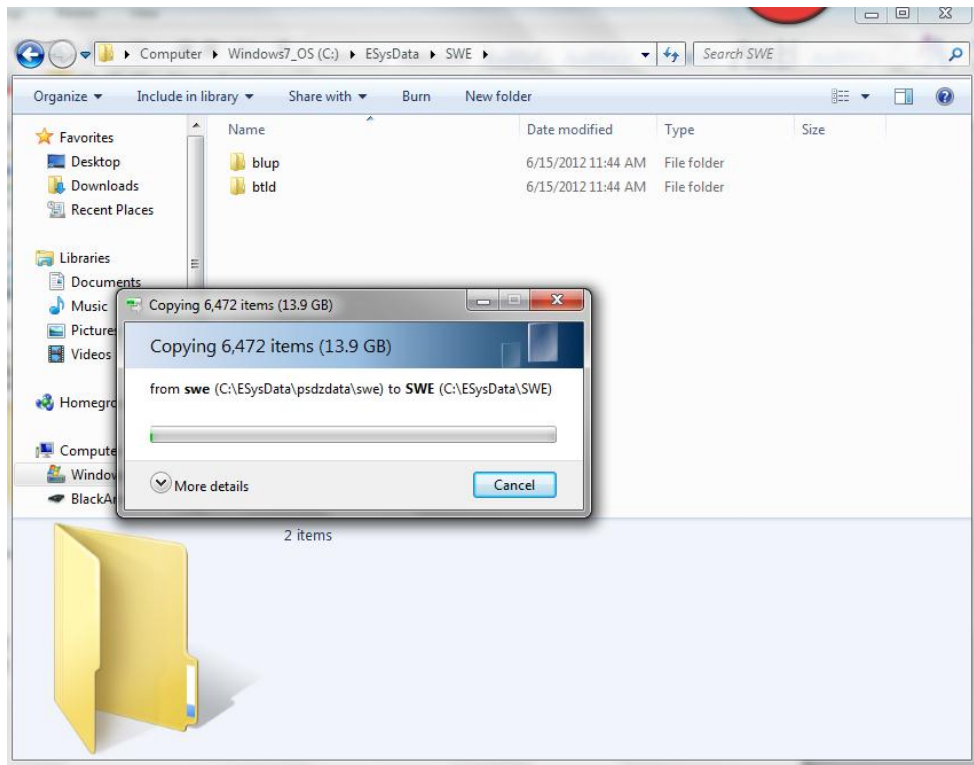
- 3) In the box at the right, select the C:\ESysData\psdzdata folder and click “OK.” It will begin extracting the psdzdata files. This can take about 15 minutes since there is quite a bit of information.



NOTE: You do not need to extract each psdzdata RAR file. As long as all 24 are in the same place, by opening file #1, it will pull the data from all of them.

- 4) Once all the files are extracted, open the C:\ESysData\psdzdata\swe folder and COPY (not MOVE, **COPY!!**) to C:\ESysData\SWE:





Again, this takes around 15 minutes since there are lots of files in the procedure.

## You're Now Ready To Program

You obviously need the requisite cable.

When you get to the point in E-System where a PIN is required, use "2690" and it should work fine.